

**EDITORIAL
TRANQUILIZERS**

when the world feels too large to fill, a selection of atemporal seconds might just wake up that screaming monster inside. that is, by no means self-sacrificing, just a brief sequence of consciousness streaming outside the spheres. we begin our day just as plain as usual, barren trees outside cold windows. but wonder not, temporary passenger through pierced veins. your journey's merely beginning.

we took a look inside the invisible doll house this time. there are only ruptured spheres there, a remarkable resemblance of torn eyelids. by laws of civionics, diagonal buildings are bound to break, tearing open the bare-bone of human misbeliefs. barren land, stones and shards of glass emerge into shredded gravity. social machineries once chained together swallow themselves as lack of hunger disobeys conformity. the doll house is no longer invisible and inside stands fragile the self and its mirror. force yourself naked even outside the spheres, the strings and straps have fallen.

backtracking into erasing futile realities, we return to tingling nightmares. and as they say, my dear soulless passenger... lauf, lauf!

CONTENTS

**Editorial
Tranquilizers**
p.1

**Glass
Showcase**
p. 2-3

**Stone
Showcase**
p. 4-5

**Abuse
Showcase**
p. 6-7

**Chains &
Scissors**
p. 8-9

**Eye
Teaser**
p. 10

GLASS SHOWCASE: THOMAS EKELUND

Name: Thomas Martin Ekelund

Location: Gothenburg, Sweden

Occupation: Graphic Designer, Musician and Visual Artist

Definition of personal sphere:
I Stand On The Inside, Looking Out.

Artwork in 4 words:
Attempting To Achieve Balance

What is inspirational for Thomas Ekelund:
Right now I draw most of my inspiration from the Golden Ratio and geometry.

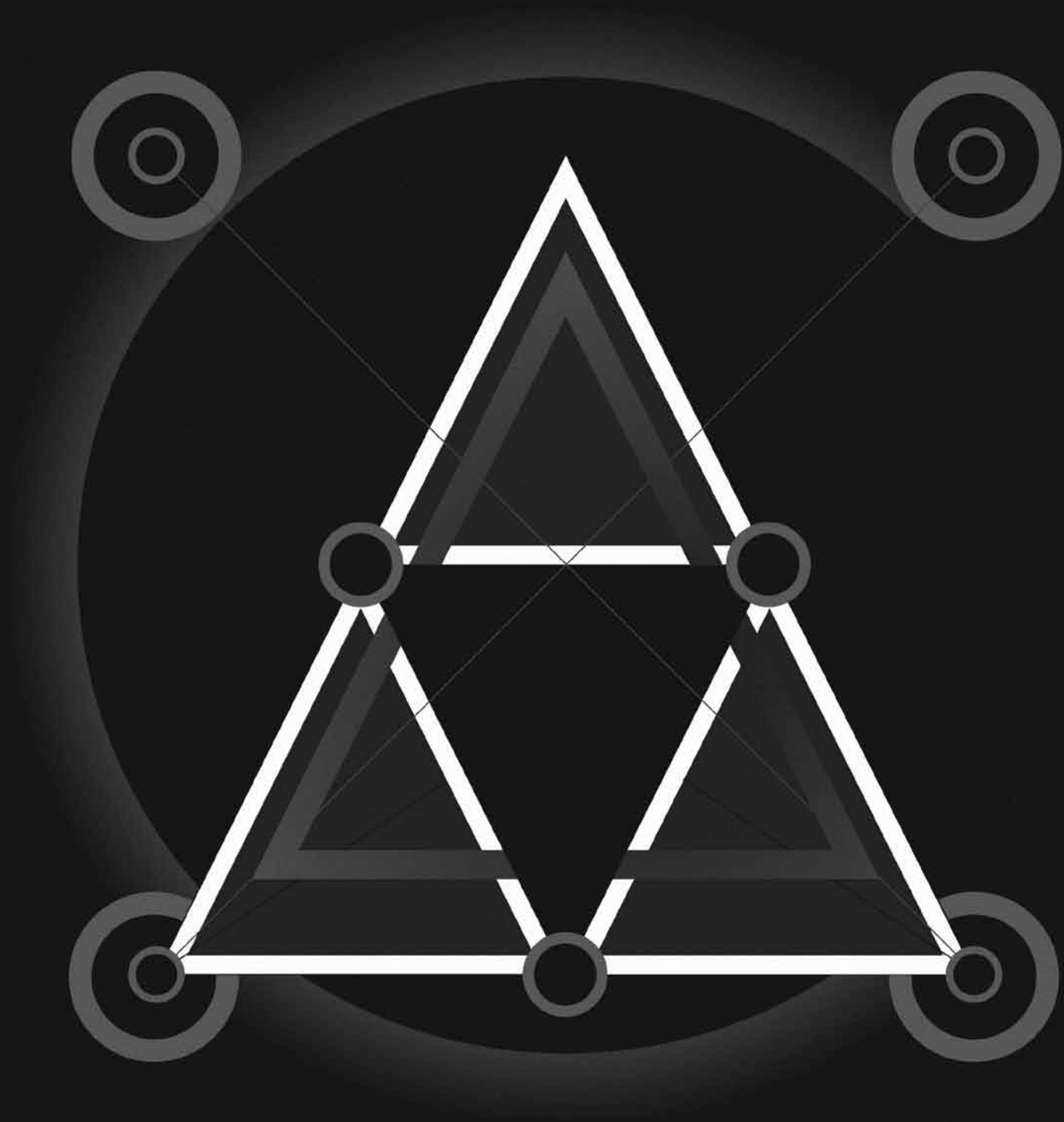
Currently favourite artists:
Fibonacci, Jan Tschichold, John Dee, Emmanuel Swedenborg, David Tibet, Hermes Trimegistus....

Tools of trade:
Computer, camera, ruler, x-acto knife, cutting mat, scissors, paper, pens and pencils, ink, paint, duct tape, old magazines, Illustrator, Photoshop....

Current obsessions:
The 1920's, Geometry, the Golden Section, German Expressionism, Art Nouveaux and Alchemy

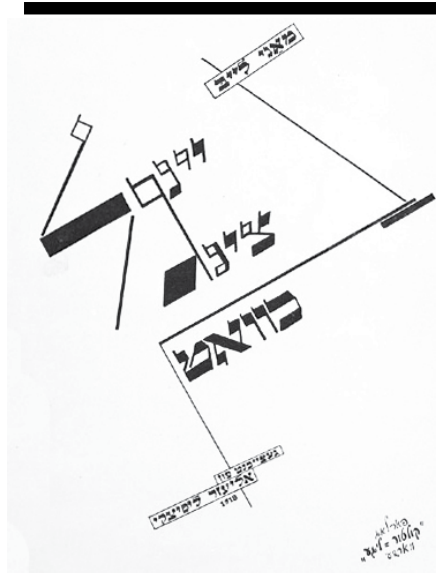
Personal temptation:
Absinthe





“A vision of a seal of balance and order, through which chaos emerges”
part of Geomysticism series

STONE SHOWCASE
the “Schaumachinerie” of El Lissitzky



**“We brought
the canvas
into circles.**

**And while
we turn,
we raise
ourselves into
the space.”**

**Name:**

Lazar Markovich Lissitzky

Born:

November 23, 1890

Died:

December 30, 1941

Location:

Russia

Occupation:

Artist, Designer, Photographer, Typographer,
Polemicist and Architect

Techniques:

Prouns, photomontage,
horizontal skyscrapers

Associated with:

Russian avantgarde and the Suprematism
Art Movement

Notable influences:

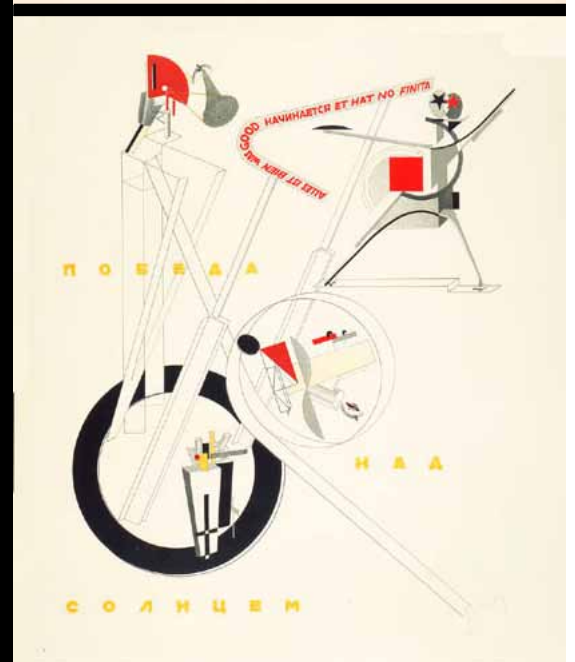
Kazimir Malevich, the Bauhaus and
Constructivist Movements, Weimar Berlin,
the ancient Jewish culture

Tools of Trade:

Jewish themes and symbols,
spacial elements, geometric forms

Obsessions:

Hand of God, geometry



ABUSE SHOWCASE

DAS ICH



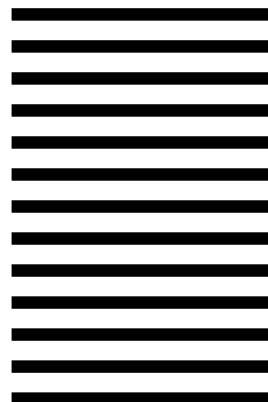
Name: Das Ich

Location: Bayern, Germany

Occupation: Musicians

Gig: the Romanian Darkfest, Bucharest

When: 14 February, 2009



Definition of artistic sphere:

“For us, as musicians, doing music is as important as drinking and eating”

Stage Performance vs. Music:

“No drama play, but each show is theatrical”

Techniques:

Noise-loops bedded into symphonic arrangements, electronic and early industrial elements

View of Eastern vs. Western Audience:

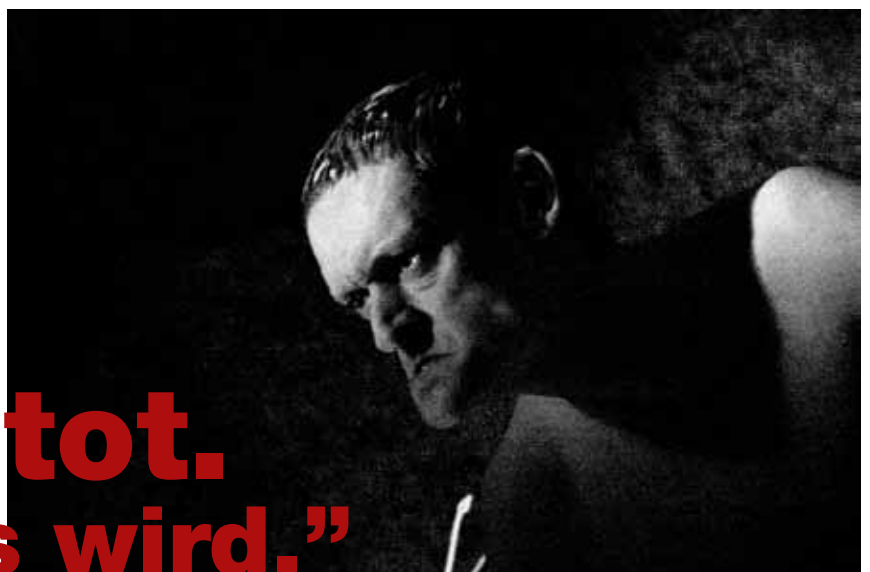
“Fascinating/not boring vs. decadent/spoiled”

Reputation:

Apocalyptic eccentrics

Current obsession:

“Do you want to know more sexual things?” (*Bruno Kramm*)



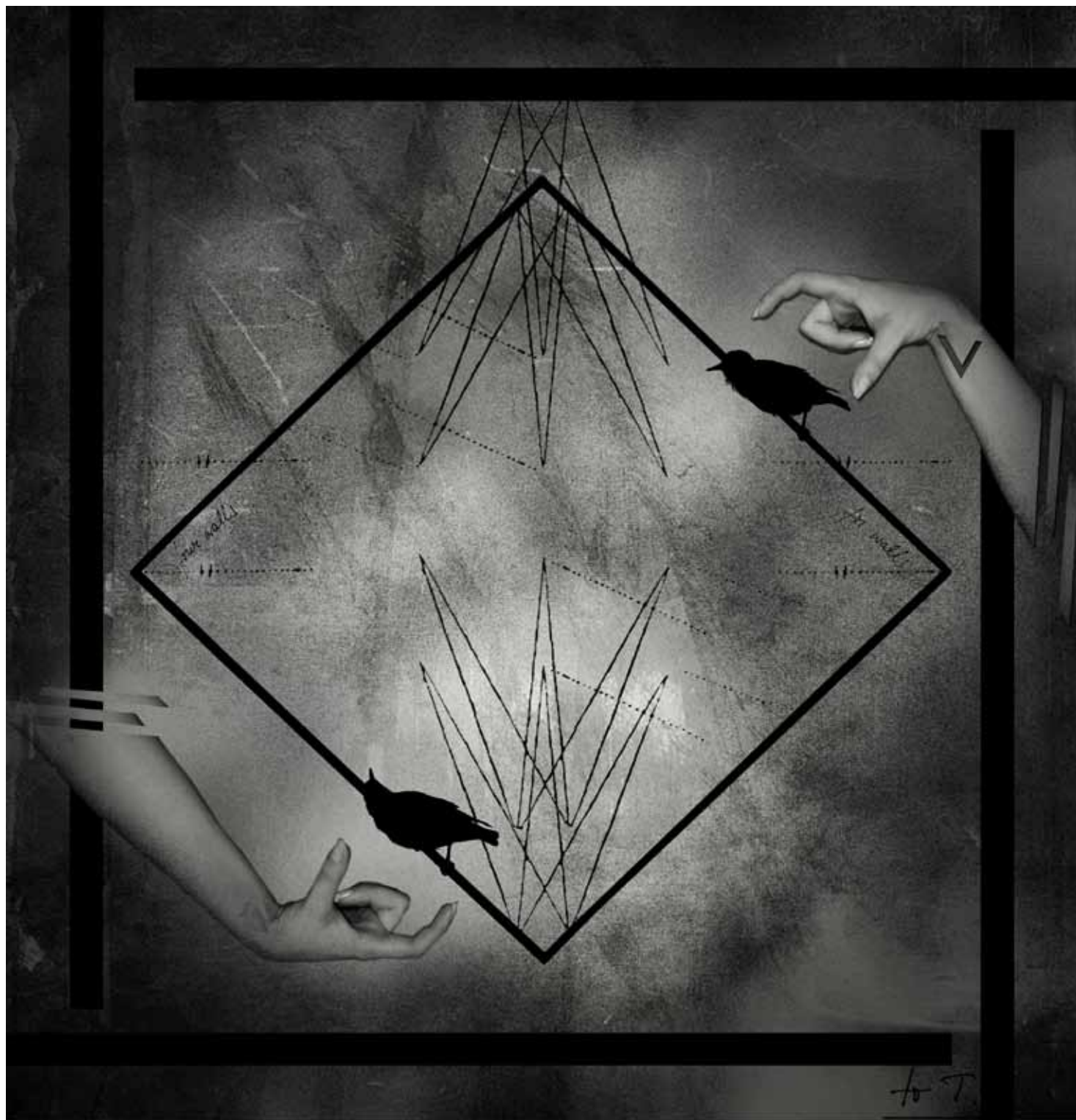
≡≡≡
**“Gott ist tot.
Und doch es wird.”**

CHAINS AND SCISSORS



"Phantasmagoria"
thora noir

CHAINS AND SCISSORS



"For Walls | Four Walls"
anemic.cinema

EYE TEASER:

APRIL - FERNANDO MANCHADO, SPAIN/GERMANY



sfere.ro © 2007-2009

all rights reserved.
the reproduction of all
material presented in the
nsphere is restricted.

the photographs and
portfolios are property of
the respective artists.
for editorial matters, please
contact the gallery.

graphics&layout:
anemic.cinema
www.in-circles.com

words:
thora noir
anemic.cinema
m.david

contact:
virtual.spheres@gmail.com

